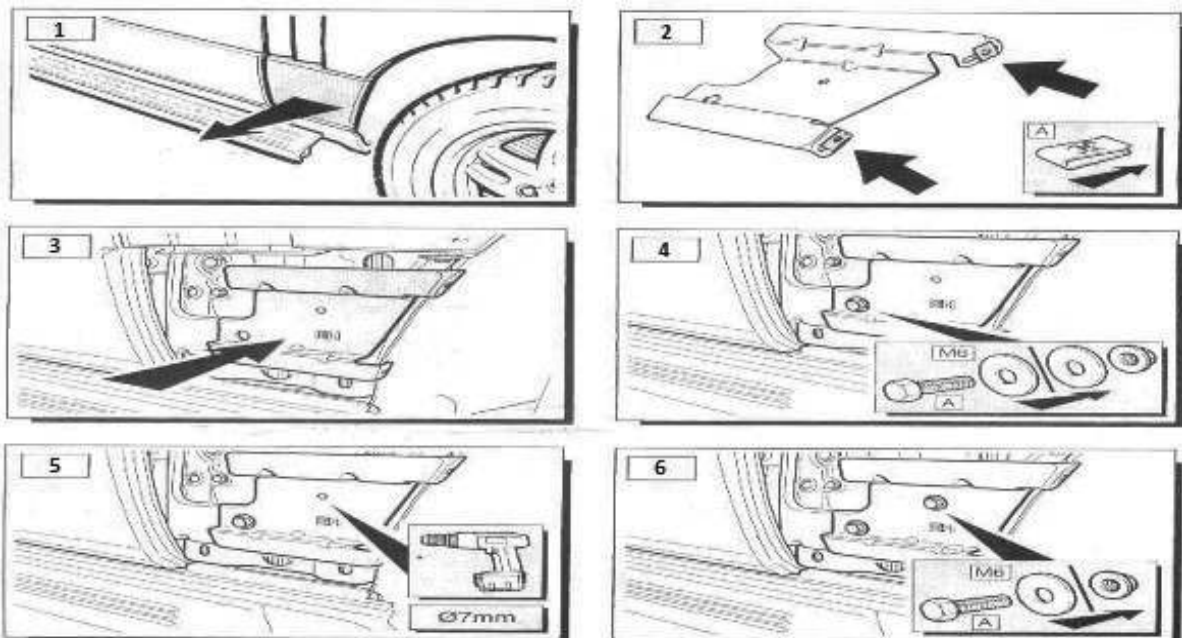


## Range Rover Vogue Running boards fitting instructions.

Customer Information: It is highly advised to have the running boards fitted by skilled technicians who have the proper tools, equipment, and training to correctly and safely add equipment to your vehicle. These procedures should not be attempted by “do-it-yourselfers.”

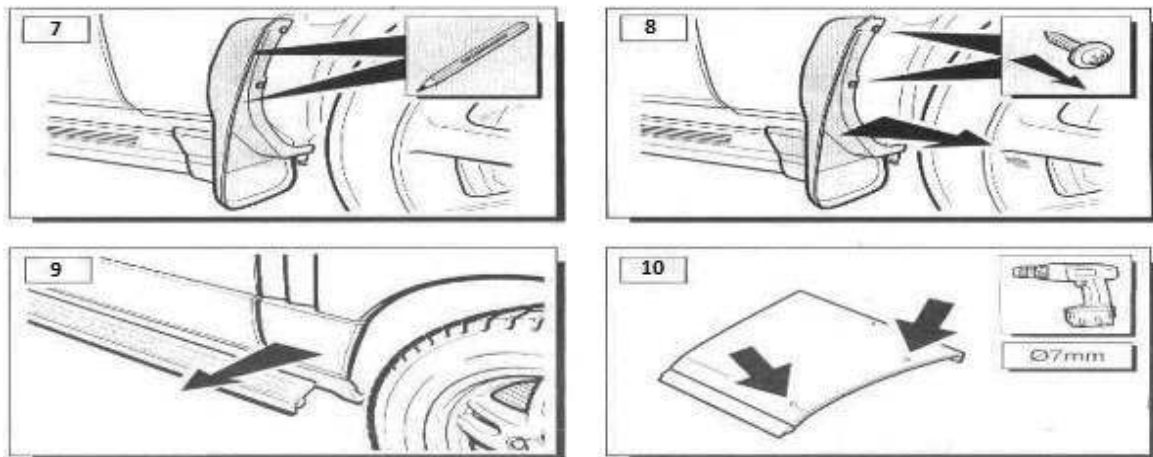
1. Remove your original front mud flaps and discard them (if applies)
2. Remove the small squarish panel – it pulls off from the bottom and is attached by one bolt to the top. You can reach the bolt by pulling back the wheel arch liner. Loosen the bolt and the panel should come off easily.
3. If you had original mud flaps there will probably be a bracket which you will have to unbolt and discard.
4. Fit the bracket from our set to the large hole on the car chassis and align the bracket to fit the car. Use a centre punch and hammer to mark the placement of the smaller hole. Afterwards drill an opening in the marked place with a 7mm diameter drill. Use two m6 bolts, washers and nuts to mount the bracket onto the car. Take two spring clips from the set and fit them onto the side of the bracket (top and bottom, where the mud flaps were mounted)



5. Fit the new mud flaps to the removed panel, align it according to its shape and with a marker pen mark placements of new holes for the bolts. Use a 7 mm drill to drill new holes (one by one)

6. You can replace the panel back onto the car first aligning the top, tightening the bolt and then popping in the bottom.

7. Now you have to get underneath the car under the front door. On the chassis leg you will see two large holes and a smaller one (M8) between them (it can be covered by some gaffers tape, remove it), directly opposite to it going outwards on the inner sill you will have two M6 holes. You can fit the front running board bracket by loosely bolting in the two m6 bolts and washers to the inner sill and the M8 bolt and washer to the chassis leg with a 14 mm socket.

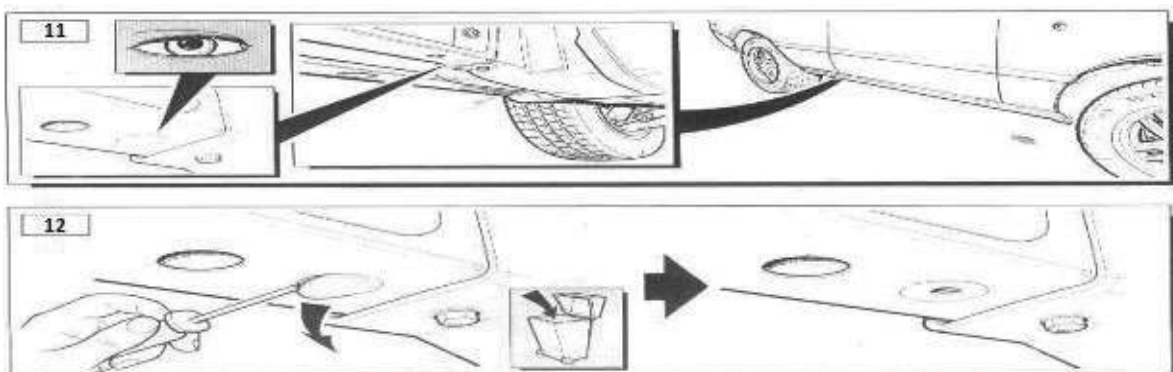


8. Same principle applies to the rear left hand side bracket however there might be a small plastic cover that you will have to remove to reach the inner sill holes. The cover is attached by 3 bolts. Be careful while removing it as dirt from the undercarriage might get into your eyes.

9. Tighten all bolts both front and back beginning with the side ones. Remember to have everything properly aligned.

10. Before replacing the plastic cover at the rear you will have to cut out its corner for it to fit the m6 bolts that you fitted. Once you cut it out you can fit it underneath the car.

11. Now we can proceed to the front mud flap, it has several different mounts to fit it on the car. You begin with folding the bits on the edge of the mud flap behind and bolt them up with self tapping screws to the small spring clips attached to the side bracket from the beginning of the whole procedure.

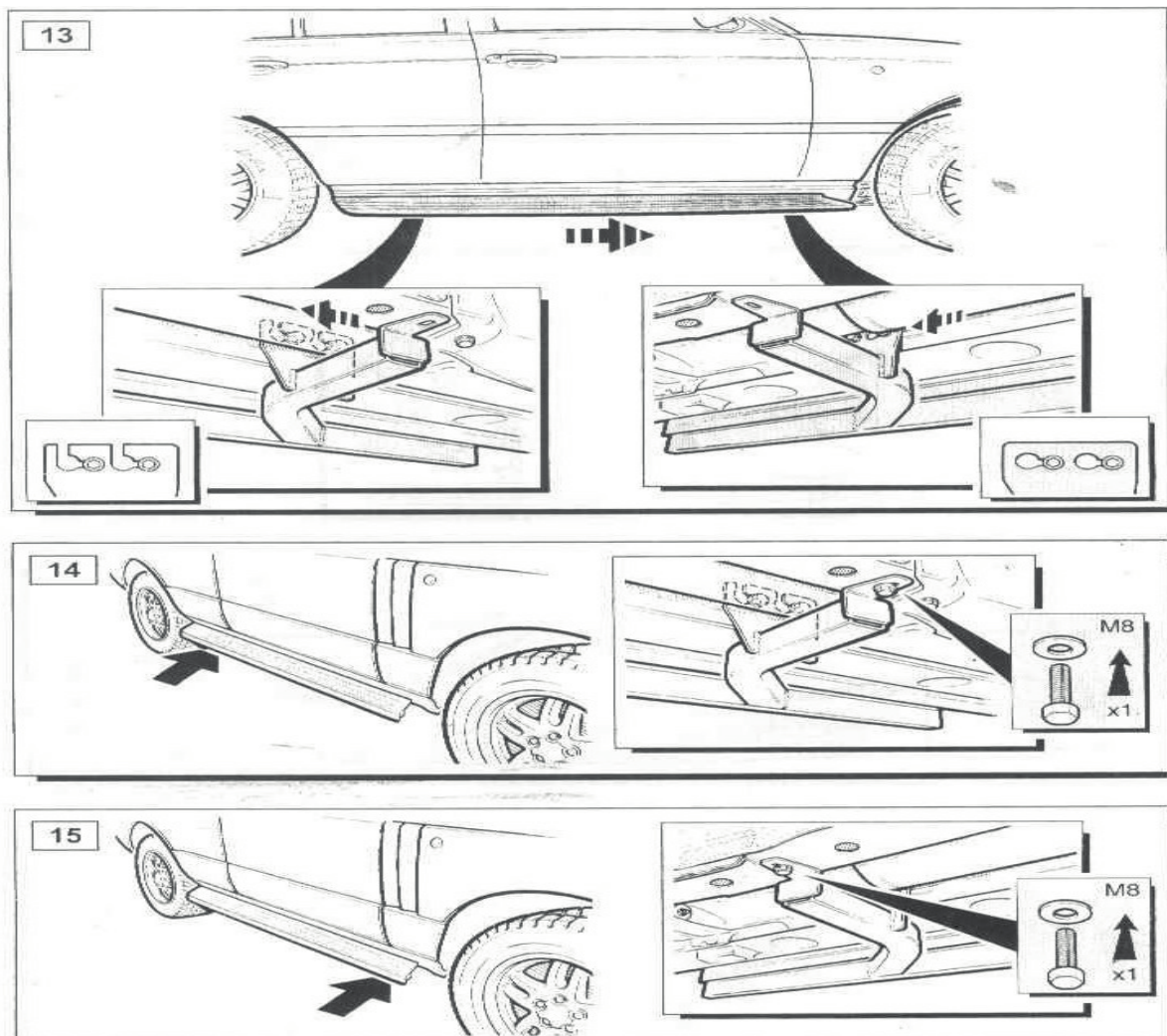


12. When that is done you align the mud flap with the side step and place the fir tree clip into the largest hole on the mud flap to connect it to the side step.

13. Finally you use the bolt and nuts to fit the mud flap to the holes you have previously made in the small side panel.

14. All of the above steps apply to the right hand side however there are a few points that differ.

15. (step 7)At the front there is another plastic cover that will have to be removed and cut in order to mount the M6 bolts to the inner sill. You can also try to cut it while still on the car as presented on the picture below.



16. (step 8)As there is an air tank on the right side, the rear bolts have been already fitted by the manufacturer as they would be hard to reach. You have to loosen them and the bracket should slide on to them. Tighten them up and proceed to the next step.

